

York Road, KT13

Approximate Gross Internal Area
181.92 sq m / 1,958 sq ft

Garage
18.04 sq m / 194 sq ft

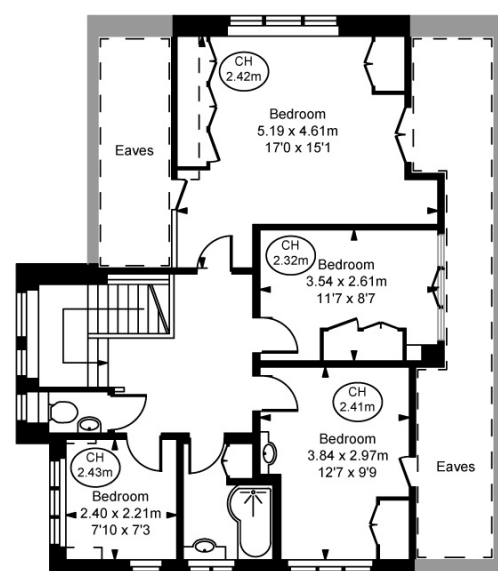
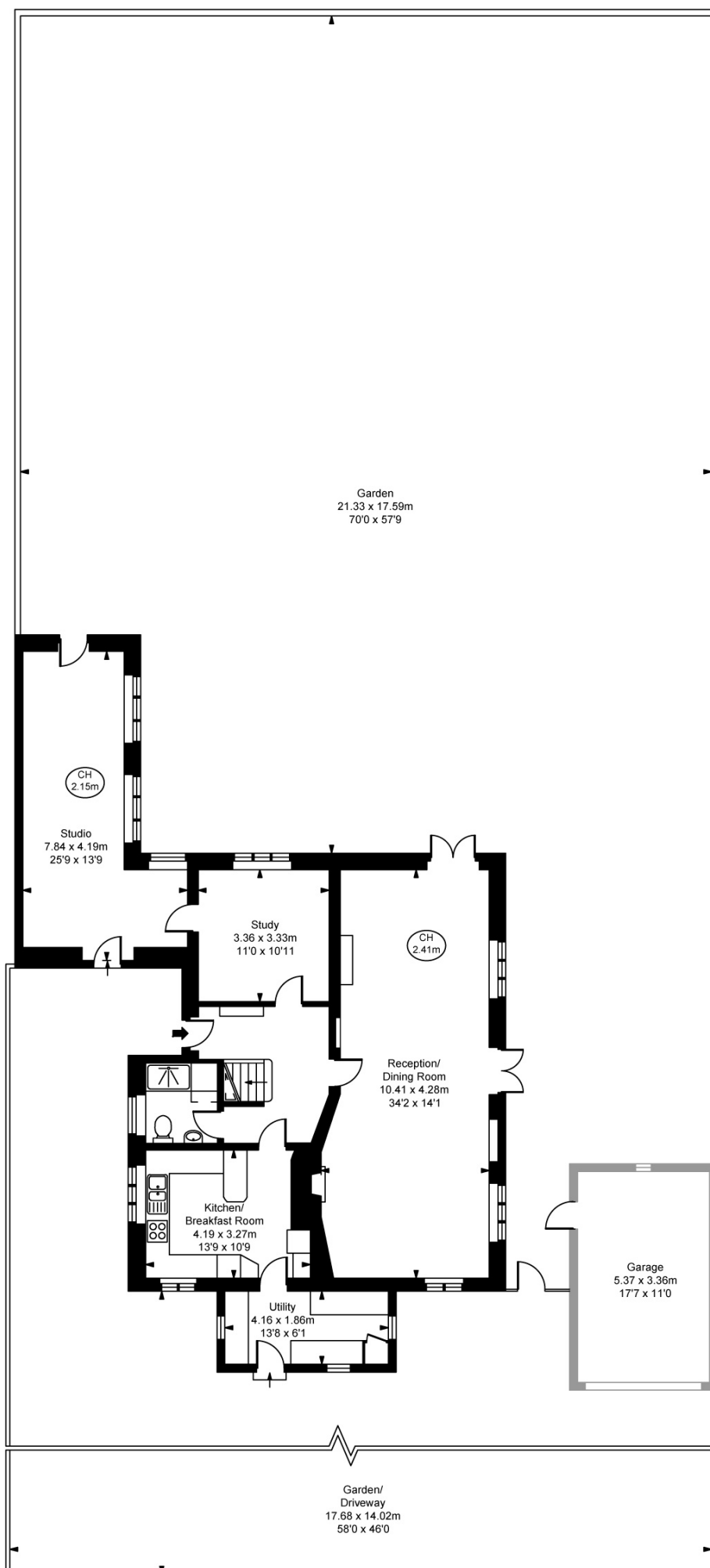
Eaves Storage
21.19 sq m / 228 sq ft

Total Areas Shown On Plan
221.15 sq m / 2,380 sq ft

Approximate Plot Size
825 sq m / 8,880 sq ft

(Including restricted height
under 1.5m □ □ □ □)

(CH = Ceiling Heights)



First Floor
Approximate Gross Internal Area
63.84 sq m / 687 sq ft

Ground Floor
Approximate Gross Internal Area
118.08 sq m / 1,271 sq ft